

\\120\active\12060456\design\drawing\80456-Figures.dwg  
 2004-09-10 08:57AM By: isander

JAN 2004  
 12060456

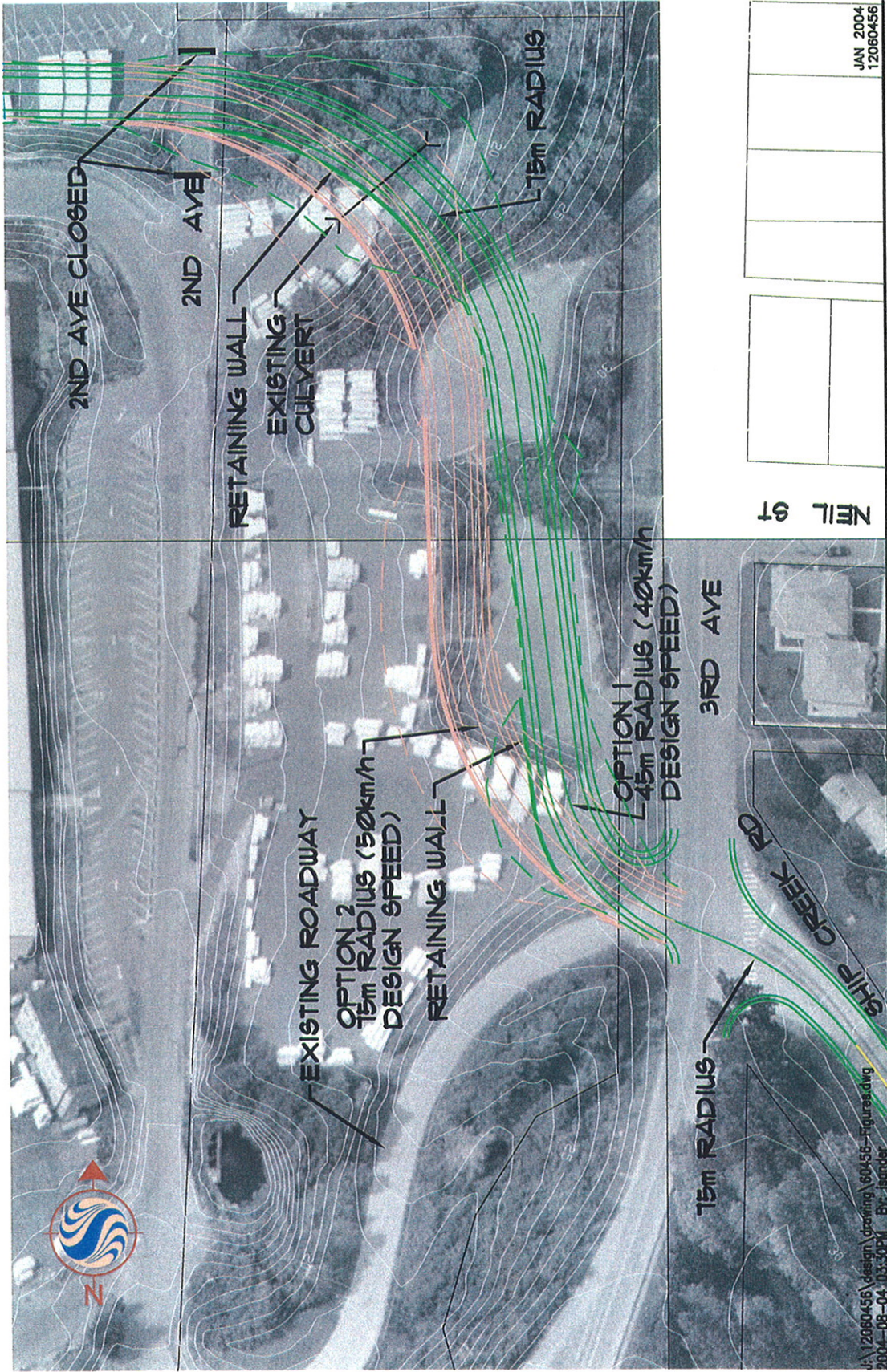
ORIGINAL SHEET - ANSI B



Stantec Consulting Ltd.  
 977 Fort Street  
 Victoria BC Canada  
 V8V 3K3  
 Tel. 250.388.9161  
 Fax. 250.382.0514  
 www.stantec.com

Client/Project  
 CITY OF PORT ALBERNI  
 HARBOUR ROAD  
 PREDESIGN STUDY

Title  
 FIGURE 4  
 HARBOUR ROAD SOUTH



Stantec Consulting Ltd.  
977 Fort Street  
Victoria BC Canada  
V8V 3K3  
Tel. 250.388.9161  
Fax. 250.382.0514  
www.stantec.com

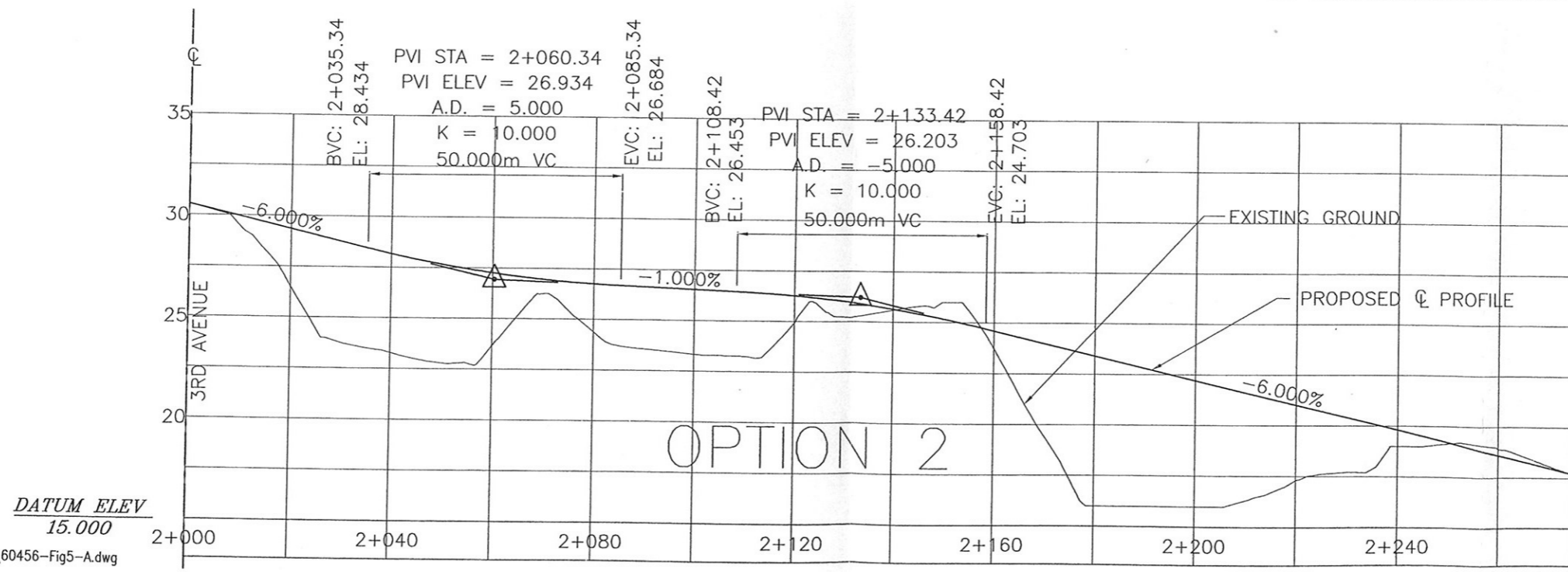
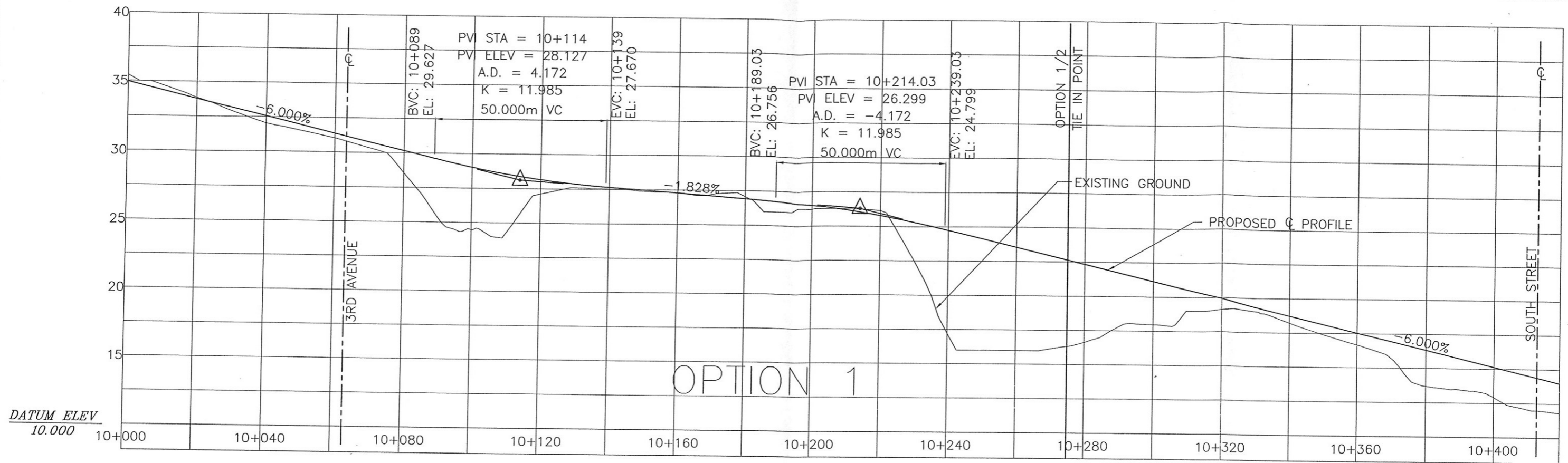


**Stantec**

--- TOE OF SLOPE

FIGURE 5

HARBOUR ROAD SOUTH  
SHIP CREEK RD TO 2ND AVE



V:\120\active\12060456\design\drawing\60456-Fig5-A.dwg  
2004-09-10 08:42AM By: ktrace

SEPT 2004  
12060456

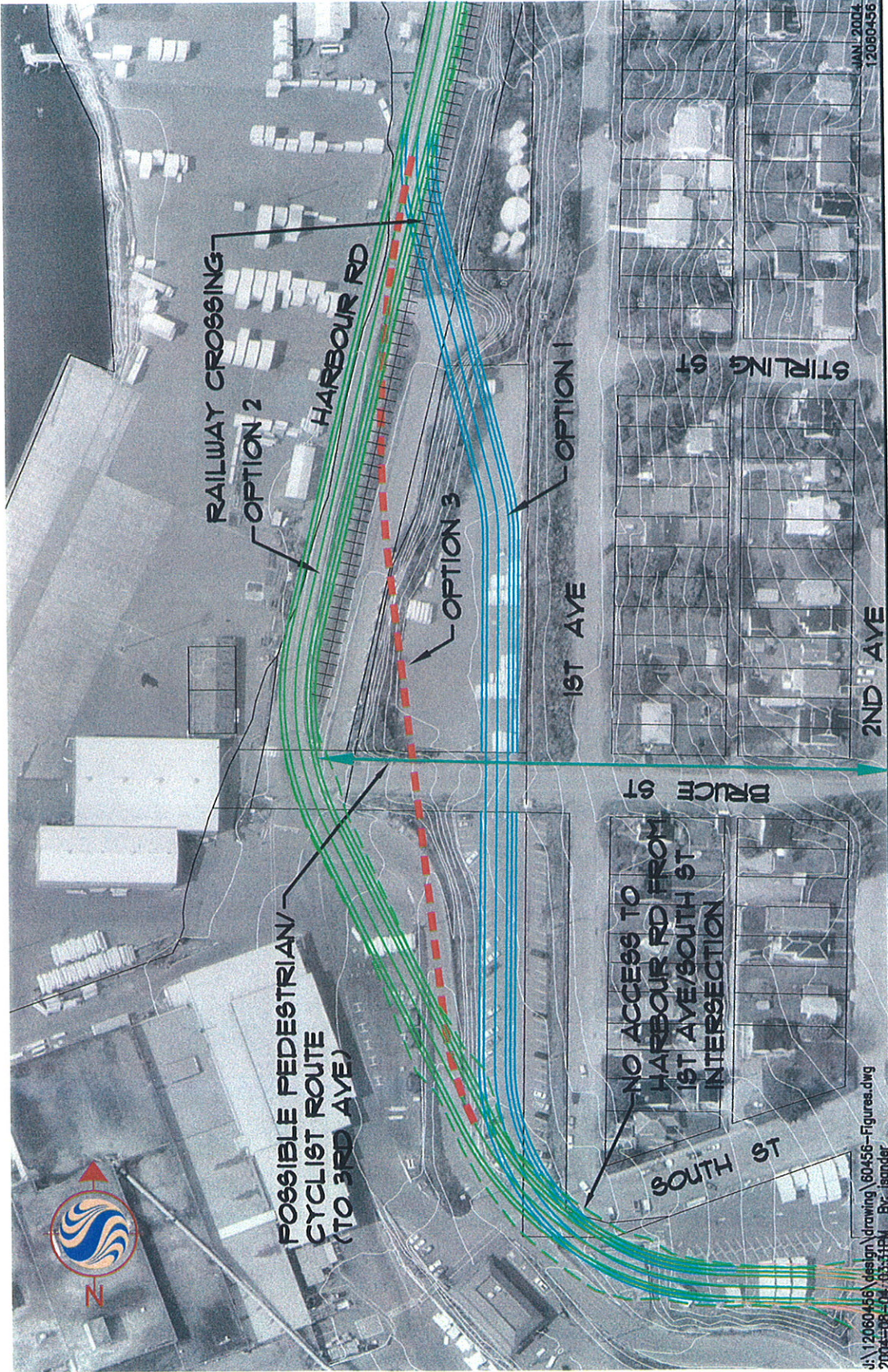
ORIGINAL SHEET - ANSI B



**Stantec Consulting Ltd.**  
977 Fort Street  
Victoria BC Canada  
V8V 3K3  
Tel. 250.388.9161  
Fax. 250.382.0514  
www.stantec.com

Client/Project  
CITY OF PORT ALBERNI  
HARBOUR ROAD  
PREDESIGN STUDY

Title  
**FIGURE 5A**  
**OPTION 1 & 2 PROFILES**



Client/Project

CITY OF PORT ALBERNI  
HARBOUR ROAD  
PREDESIGN STUDY

FIGURE 6

HARBOUR ROAD SOUTH  
2ND AVE TO HARBOUR RD  
CENTRAL BOUNDARY

+++++ EXISTING RAILWAY  
- - - - - TOE OF SLOPE

Stantec Consulting Ltd.  
977 Fort Street  
Victoria BC Canada  
V8V 3K3  
Tel. 250.388.9161  
Fax. 250.382.0514  
www.stantec.com

