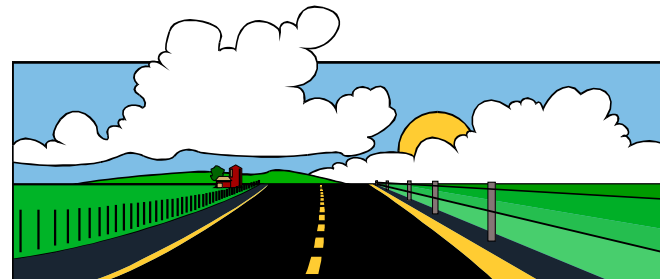


East Bypass Route

- **1970 and 1980 reports from AESL and N.D.Lea evaluated bridge crossings of Roger Creek and both recommended 21st Ave. Alignment**
- **Referenda in 1982 and 1983 indicated voter support of a 10th Ave crossing contingent on provincial cost sharing. Provincial support was not available.**
- **Development of the 1993 OCP included the “east bypass” transportation corridor which includes the 21st Ave Crossing**
- **This transportation plan has been endorsed by the Ministry of Highways and the Regional District**



East Bypass Bridge

**CITY OF PORT ALBERNI - ENGINEERING DEPT.
ROGER CREEK ROAD CROSSING**

1980 ENR Index 3237

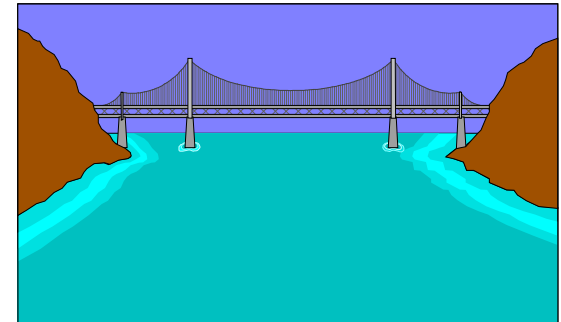
COST ESTIMATES *

1999 ENR Index 6053

Inflation Factor 1.870

N.D. LEA (1980)

	10th Avenue Crossing	21st Avenue Crossing
Bridge Structure (1980\$)	\$1,797,000	\$1,043,000
R/W Acquisition (1980\$)	\$100,000	\$0
Roadworks (1980\$)	\$194,000	\$559,000
Contingency 20% (1980\$)	\$418,200	\$320,400
Engineering 10% (1980\$)	\$209,100	\$160,200
Total (1980\$)	\$2,718,300	\$2,082,600
Total (1999\$)	\$5,083,367	\$3,894,574

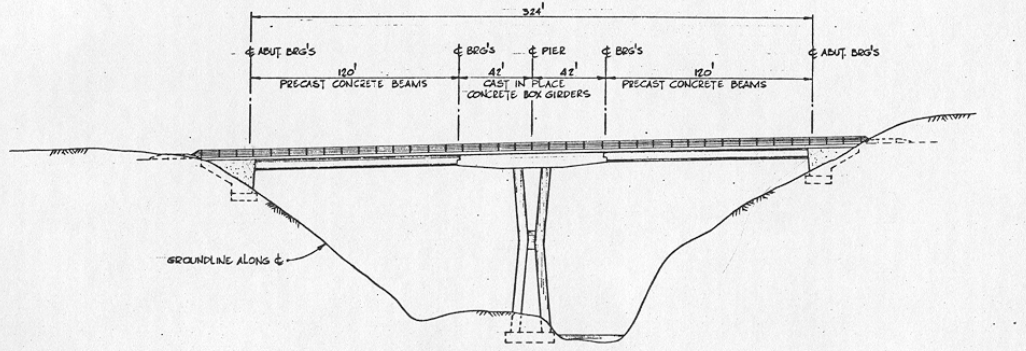
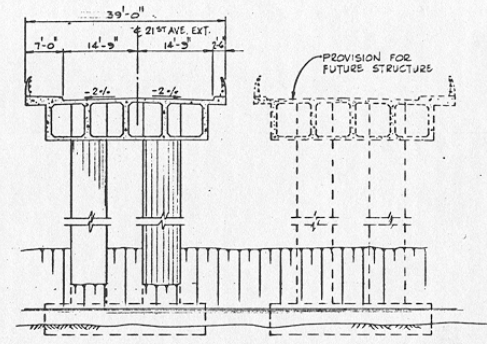
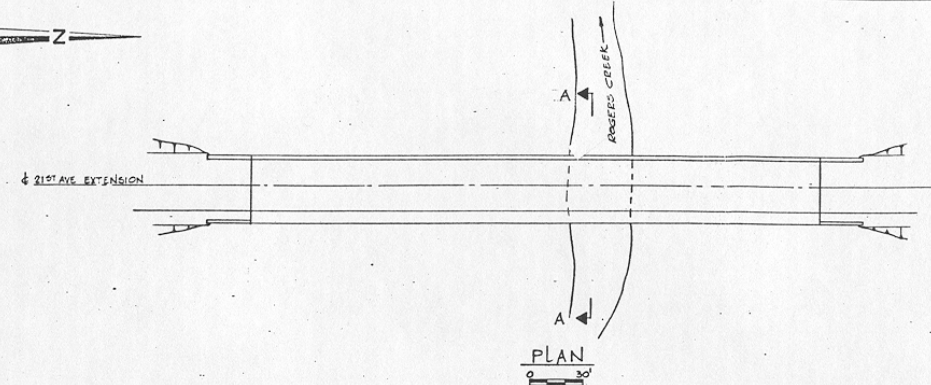
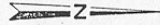


* Cost Estimates from Figure 7.2 of 1980 report Study of Major Road Crossing of Roger Creek prepared by N.D. Lea Associates. **Costs represent construction of a 2 lane bridge.**

STANLEY (1998)

Bridge Structure (1998\$)	N/A	\$7,800,000
R/W Acquisition (1998\$)	N/A	\$0
Roadworks (1998\$)	N/A	\$2,100,000
Contingency 20% (1998\$)	N/A	included
Engineering 10% (1998\$)	N/A	included
Total (1998\$)		\$9,900,000
Total (1999\$)		\$10,098,000

* Cost Estimates from Appendix "A" of 1998 report Alberni Valley East Bypass Study prepared by Stanley Consulting Group Ltd. **Costs represent construction of a 4 lane bridge.**



DISTUM EL 40 11+00 12+00 13+00 14+00 15+00 16+00

NOTES
 1 DESIGN SPECIFICATIONS: CAN 3-SG-MTB
 2 DESIGN LIVE LOAD MS 250

N. D. Lea & Associates Ltd. TRANSPORTATION ENGINEERS	
ROGERS CREEK CROSSING 21st AVE. ALIGNMENT No 6 - CONCRETE ALTERNATIVE GENERAL ARRANGEMENT	
DRAWING NO.	FIG. 7-11

